

# MACBETH

+ macdeath: a coda



Directed by  
**Petra Kalive**

Written by  
**William Shakespeare & Jean Tong**

**15-24 September 2016**

**Guild Theatre, Union House, University of Melbourne**



## DIRECTOR'S NOTE

Something keeps drawing me back to Macbeth. Perhaps unnatural forces are to blame. Perhaps because it is the shortest Shakespeare. Perhaps because the events in the world of the play exist in a time and place that feel out of balance – often how our own world feels.

I feel very lucky to have embarked on this text with this group of performers and an incredible creative team. I am a collaborative director. This means I am very influenced by the dynamic of the team that I work with.

The production that you will see is a facilitation of the various ideas, ambitions and talents of all the people involved. I have not come in with a top heavy vision and asked my team to meet it. Along the way there has been a discussion, consultation and we have found what this play is, for this group of people in this time and place, together. Ironically, it is a shared ambition.

This production asks us to consider what this tale of ambition and murder means in the context of the world today. What invisible structures make us behave in ways that do our humanity a disservice?

I hope you leave questioning why we continue retelling these old stories; what do they reveal about the world that we live in and the narratives that we continue to promulgate? Just like you, the actors are watching – we are all complicit in the stories that we choose to tell and watch.

A big thanks to the team that helped realise this work – the very hard-working people in the Union House Theatre Office; Erin, Clynton, Gus, Jim and Christa. It wouldn't be possible without your hard work and dedication. A big shout out to my creative team who challenge, inspire and just help me get on with things. And finally to the cast for bringing their incredible selves to the roles that they play – it's been an amazing ride. I think you're all just tops. Enjoy.

**Petra Kalive**

Artistic Director  
/Theatre Coordinator  
Union House Theatre



## UNION HOUSE THEATRE

Union House Theatre programs plays, workshops and events that give students a taste of professional practice.

**Artistic Director**  
/Theatre Coordinator  
Petra Kalive

**Production Manager**  
Gus Macdonald

**Head Technician**  
Clynton Jones

**Stage Carpenter**  
/Mechanist  
Jim Stenson

**Theatre Admin**  
& **Development Officer**  
Erin Adams & Christa Jonathan

**Running Time**  
90 minutes, no interval

### Special Thanks

The Clyde Hotel, Tim Stitz,  
Lyndall Grant, Nat Grant,  
Andrea Kaliviotis, Chris Kaliviotis,  
Katie Newman, Lisa Mibus,  
The Meat Market and all our  
wonderful theatre casuals.



@macbeth\_uht  
@unionhousetheatre



check your filters



@unionhousetheatre  
#macbethUHT

umsu.unimelb.edu.au/macbeth



# CAST



**Amir Aizenstros**  
Murderer



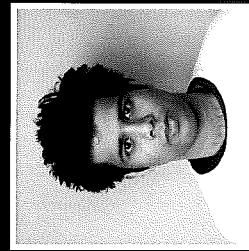
**Liam Bellman-Sharpe**  
Witch 2



**Claire Miller**  
Fleance



**Bec Riggs**  
Witch 1



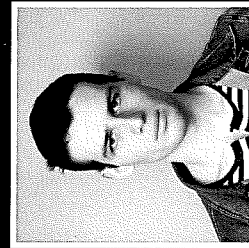
**Mithunnan Saseetharan**  
Banquo



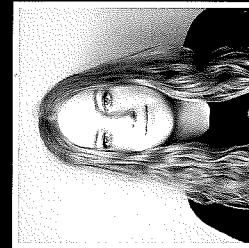
**Eunice Chuang**  
Lennox/Apparition



**Georgie Daniels**  
Macduff



**Alexander Scott**  
Duncan



**Amy Spurgeon**  
Witch 3



**Sen Wagaarachchi**  
Lady Macbeth



**Martin Hoggart**  
Macbeth



**Sián Lewis**  
Lady Macduff



**Lachlan Watts**  
Malcolm



**Kate Weston**  
Ross/Apparition



**Sherry Xu**  
Seyton/Apparition



**Max Draper**  
Bloody Captain/Old Man

# CREATIVES & CREW



**Director**  
Petra Kalive

**Assistant Director**  
Rachel Shrives

**Dramaturg/Coda Playwright**  
Jean Tong

**Coda Assistant Director**  
Jalen Lyle-Holmes

**Lighting Design Mentor**  
Lisa Mibus

**Lighting Design**  
Jacob Trethowan  
& Brendan McDougall

**Lighting Operator**  
Nikki Limgenco

**Composer/Percussionist**  
Nat Grant

**Composer/Sound Designer  
/Operator**  
Connor Ross

**Fight Choreographer**  
Lyndall Grant

**Production Manager**  
Gus Macdonald

**Head Technician**  
Clynton Jones

**Stage Carpenter**  
Jim Stenson

**Stage Manager**  
Christa Jonathan

**Assistant Stage Manager**  
Bonnie Belford & Emily Green

**Crew**  
Kira Shi

**Documenter**  
Holi Walsh

**Photographer**  
Bede McKenna

**Trailer**  
Nick Campbell & Rachel Shrives

**Publicist**  
Erin Adams

**Front of House**  
Maddi Cullen & Adelaide Greig

**Captioning**  
Rohan Byrne & Meaghan Gan